

USING THE HAYWOOD TRADER

Version 3.11



Trade from Anywhere



TABLE OF CONTENTS

TITLE	PAGE
Getting Started in Haywood Trader	3
The Main Menu	4
Market Depth – Bai Kai View	6
Market Depth – Level II View	7
Quick Trade	8
Stock Watch	8
Account Summary	9
Time & Sales	9
Settings	10
Position Blotter	15
Order Blotter	15
Movers	17
News	18
The Chart	19
Sample Layout	20

Getting started in Haywood Trader

Haywood Trader is a downloadable Windows based application. It is an advanced trading platform built for active day traders. With easy-to-use customizable windows, layout and trading features, Haywood Trader gives you the tools and services you need to take advantage of today's trading markets.

Downloading and Installing the software:

To download the latest version of Haywood Trader go to <https://haywoodtrader.com/downloads/>

Click **Download (.exe)**

Double click the installation file and install the software.

Follow the on-screen instructions on the install.

Once installed, you will see a shortcut icon for the software on your desktop.

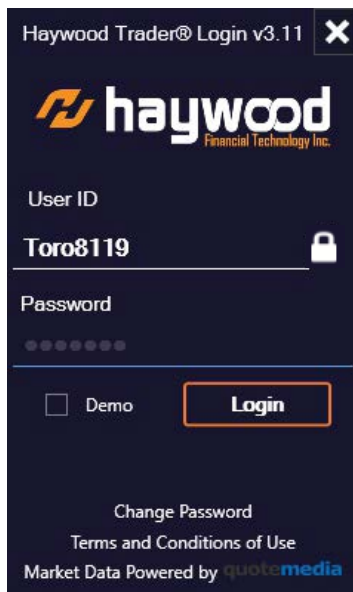
Logging into the software:

Double-click the Haywood Trader icon on your desktop.

A login screen will appear.

Enter your User ID and Password.

Lock the locker so credentials will be saved.



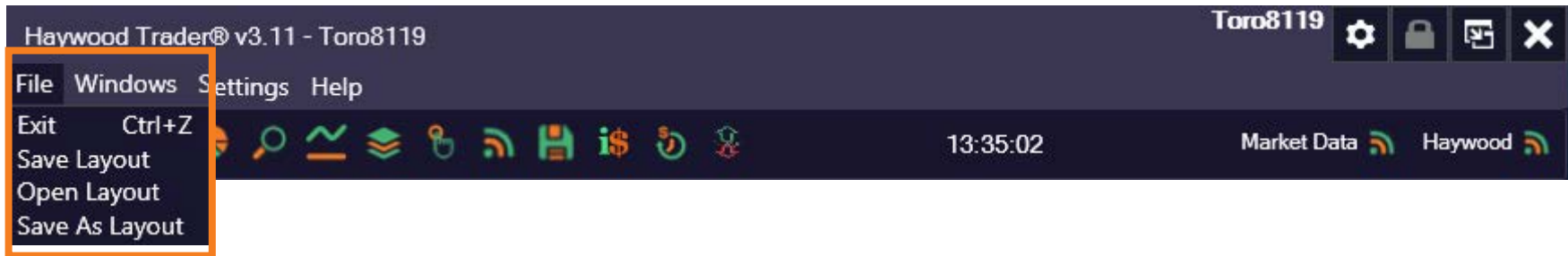
When you log on to Haywood Trader for the first time, the default layout will be displayed.
the Menu Bar



Navigating the icons from left to the right:

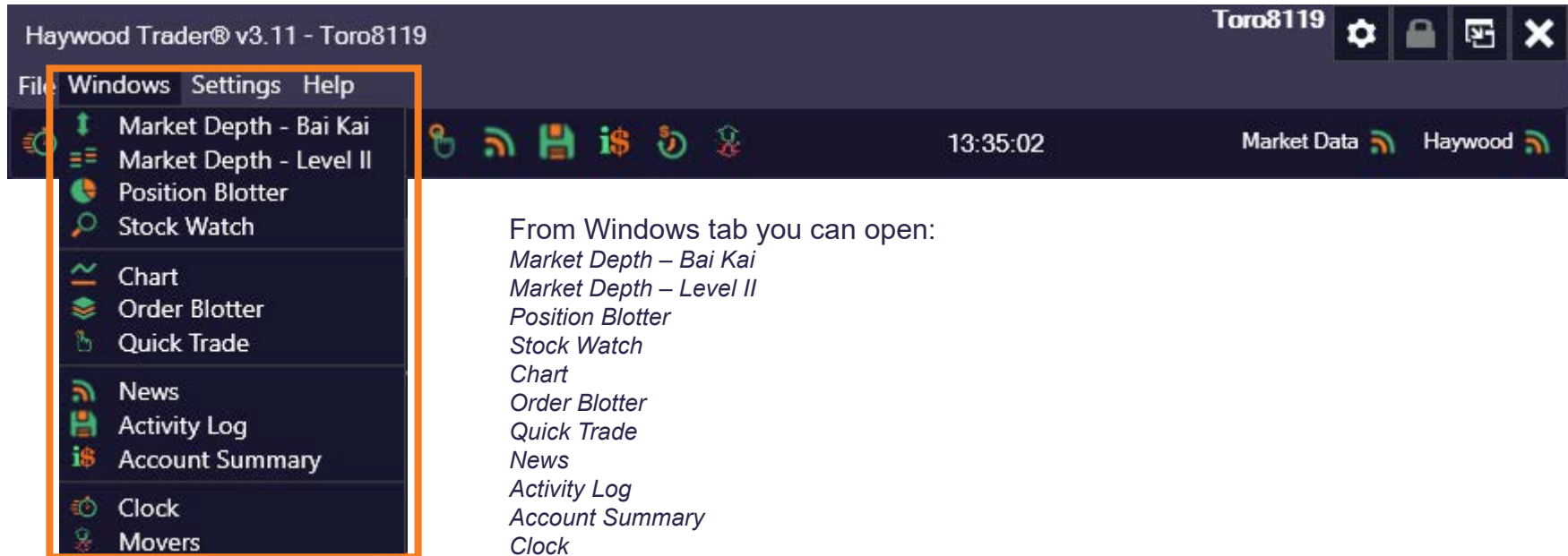
- Clock*
- Market Depth – Bai Kai*
- Market Depth – Level II*
- Position Blotter*
- Stock Watch*
- Chart*
- Order Blotter*
- Quick Trade*
- News*
- Activity Log*
- Account Summary*
- Time & Sales*
- Movers*

These indicate your connection to Market data and Haywood.



From File you can:

- Exit*
- Save Layout*
- Open Layout*
- Save Layout as*



From Windows tab you can open:

- Market Depth – Bai Kai*
- Market Depth – Level II*
- Position Blotter*
- Stock Watch*
- Chart*
- Order Blotter*
- Quick Trade*
- News*
- Activity Log*
- Account Summary*
- Clock*
- Movers*

Market Depth - Bai Kai View

Symbol: AAPL
Account: Toro8119

Last: 109.83 ↑ Chg: -2.31
Bid: 109.82 Chg %: -2.06 %
Ask: 109.83 Low: 108.71
Size: 200 x 600 High: 112.20
VWAP: 110.03 Vol: 155,359K

Time & Sales: OFF

Type: LMT
Order Type: Day
Price: 109.59
Quantity: 100

100 200 500
1000 2000 5000

Display Quantity: Order Qty
Destination: SIM1

SIM1 N/A

Buy MKT Sell MKT
Join BID Join Offer
Cancel All

Price	Market	Size	Time
110.20	SIM1	100	X 14:55:34
110.20	SIM1	100	X 14:55:42
110.09	EDGA	100	15:44:05
110.08	BOS	100	15:44:06
109.98	AMX	100	15:45:52
109.91	NSX	200	15:45:36
109.90	NYE	100	15:45:38
109.85	EDGX	300	15:46:38
109.85	BATV	600	15:46:39
109.84	ARCA	500	15:46:37
109.84	BATS	500	15:46:40
109.84	PHL	100	15:46:40
109.83	NSD	600	15:46:40
109.83	NDD	3	15:46:40
109.98	NSX	500	15:46:02
109.98	BOS	400	15:46:01
109.98	IEXG	100	15:46:00
109.97	NYE	200	15:45:51
109.97	AMX	100	15:45:50
109.95	PHL	100	15:46:14
109.94	BATY	100	15:46:17
109.91	EDGA	100	15:44:59
109.84	EDGX	700	15:46:35
109.83	BATS	100	15:46:40
109.82	ARCA	200	15:46:40
109.82	NSD	200	15:46:40

From the Menu bar - Windows tab, you can open Market Depth – Bai Kai

Type in the Symbol field, a valid symbol, example C and press Enter on your keyboard.

You can change the Order type to: LMT, MKT, Bid, Ask, Last, STP.

You can change the Limit Price

You can change the Shares Quantity

You can select and choose your Destination

You can open Level II window from the Menu bar - Windows tab - Market Depth Level II.

You can place trades through here. The symbol entry is in the upper left-hand corner. Type in a legit symbol you want to view, and press enter on your keyboard.

Flat Position allows you to flat a position at market price.

Keyboard trading toggle button. You can turn on or off the keyboard hotkeys through here.

Left Side
Bids are displayed on the left column.

Size
The number of shares of each exchange.

You can link the windows by choosing the color of the link button on the upper right corner and make that link color the same with the other windows you want to link.

Day is the time-force we use to trade during trading hours. You can change to OCO order through here. (Click [here](#) to learn how to setup OCO orders)

Right Side
Offers are displayed on the right column.

Another window where you can place trades is the Quick Trade window. Quick Trade window is where you can do quick trades with, BUY and SELL buttons.

Type in the Symbol field, the valid symbol, example FB and press Enter on your keyboard.



Stock Watch

Enter Heading Enter Symbol **New List** **Save List** **Load List**

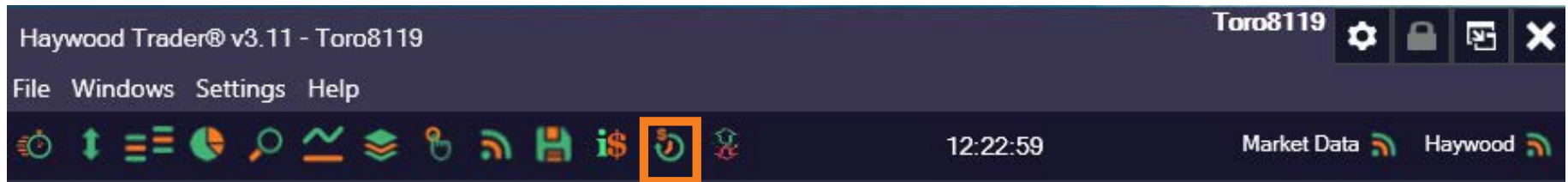
	Symbol	Change	% Change	Last	Size	Volume	Bid
X	AAPL	-2.17	-1.93	109.96	100	151,123K	109.96
X	C	-0.67	-1.46	45.35	100	20,606K	45.34
X	FB	-10.13	-3.84	253.38	115	26,353K	253.35
X	TSLA	-16.48	-3.73	425.20	9	70,905K	425.10
X	ROKU	-6.40	-3.76	163.59	100	5,353K	163.59
X	V	-0.75	-0.37	204.40	100	4,838K	204.39
X	F	0.28	3.92	7.30	100	69,095K	7.29
X	BAC	-0.31	-1.21	25.29	100	32,643K	25.29
X	SPY	-3.71	-1.09	335.11	300	74,979K	335.10
X	AAL	-0.19	-1.38	13.61	100	45,309K	13.60
X	ABB	-0.08	-0.31	26.04	100	758K	26.04
X	ABC	-0.05	-0.05	96.74	10	396K	96.70
X	AVA	-0.82	-2.33	34.43	100	225K	34.42
X	AMC	-0.09	-1.65	5.67	100	2,347K	5.66

Stock Watch is where you can create a list of stocks you want to monitor. You can save your list and load them next time.

The Account Summary tab shows both the status of your account and the summary of your trading performance.

Account	Total Position	Open PnL	Close PnL	Total PnL	Qty Traded	Exposure	Buying Power	BP Available
Toro8119	0	0.00	152.50	152.50	1,900	0.00	100,000.00	100,000.00

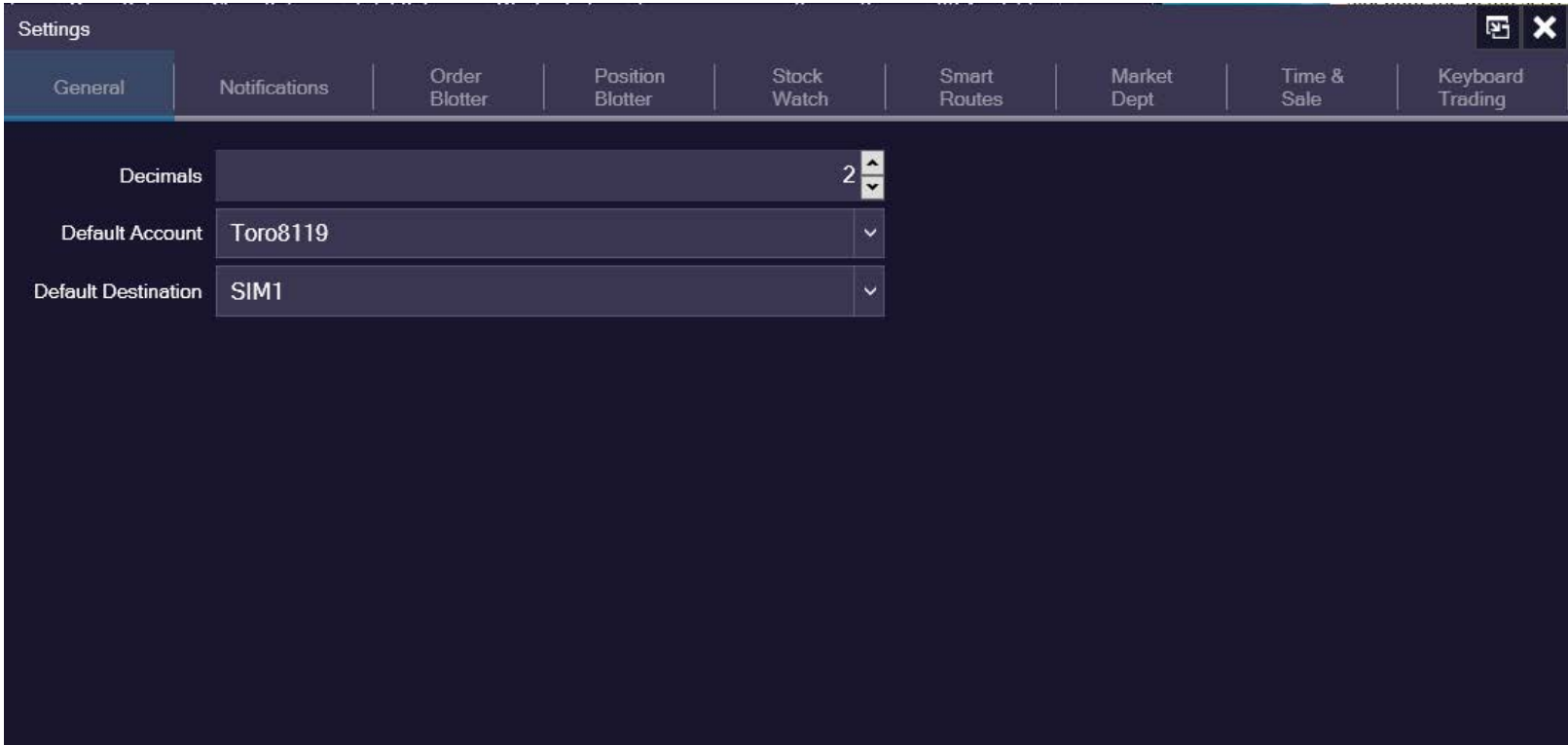
You can open a Time and Sales Window from the icon on the Menu Bar as shown below.



Time & Sales shows you the real-time trades or transactions that occur.

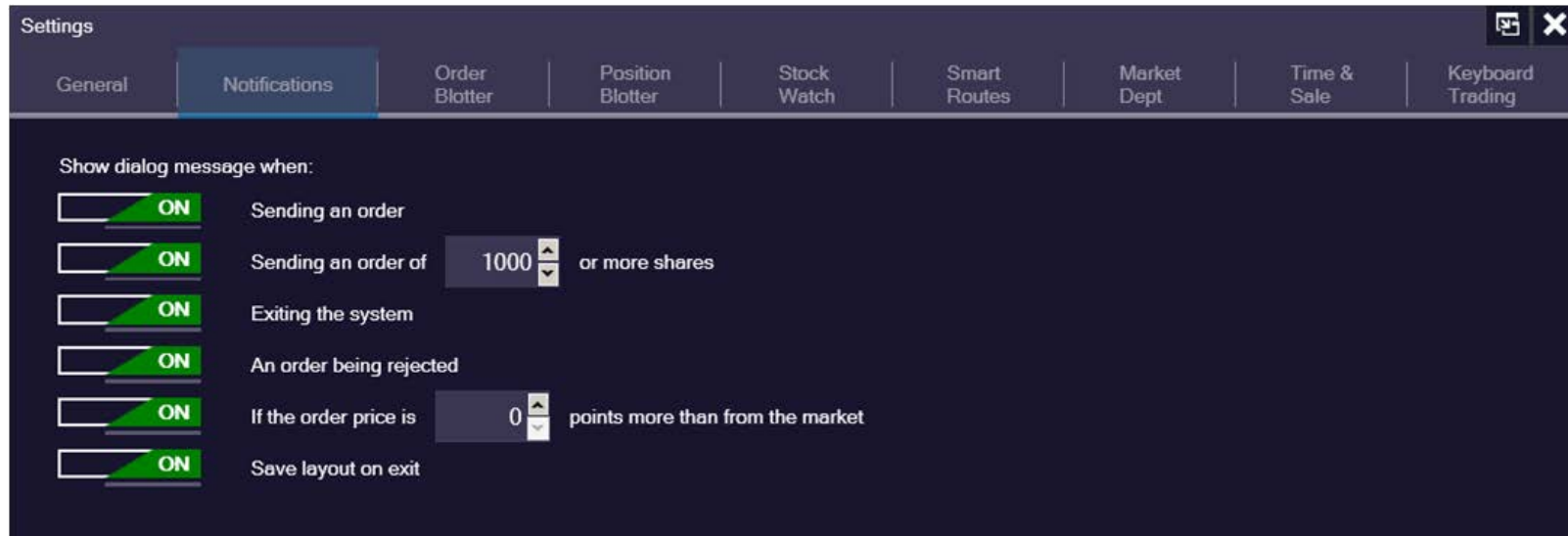
Time	Last	Size	Market
12:56:38	162.00	100	NDD
12:56:38	161.99	10	NYSE
12:56:38	161.99	30	NYSE
12:56:38	161.99	30	NYSE
12:56:38	161.99	30	NYSE
12:56:38	161.98	100	NYSE
12:56:38	161.99	100	ARCA
12:56:38	161.99	100	NSD
12:56:38	161.98	100	ARCA
12:56:38	161.99	100	NSD
12:56:38	161.98	100	NSD
12:56:37	161.93	50	NDD
12:56:36	161.98	100	NDD
12:56:36	161.92	100	NDD
12:56:35	161.98	100	ARCA
12:56:35	161.96	100	BATS
12:56:35	161.97	100	ARCA
12:56:35	161.92	10	EDGA
12:56:35	161.92	10	EDGX
12:56:35	161.93	200	NSD

The Settings tab allows you to change your settings, like adding columns on the order blotter, and/or switch the color in the Market Depth Level II window. You can even use it to setup Keyboard trading.

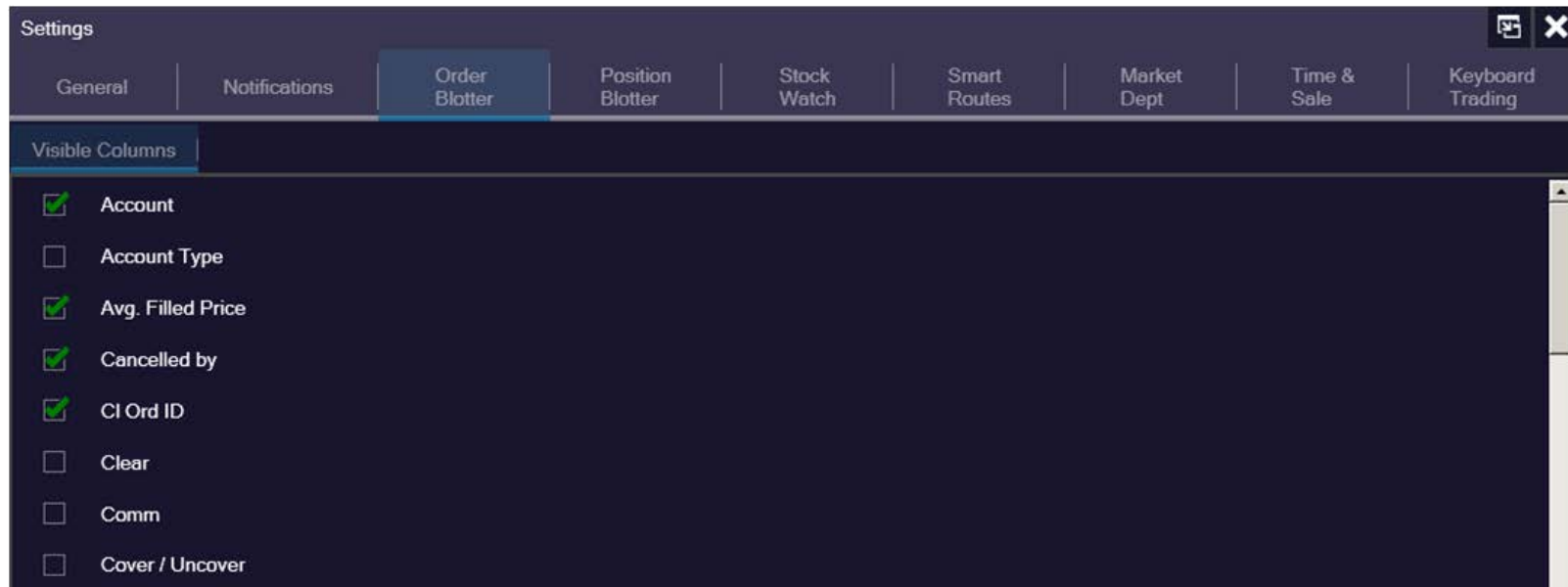


From Settings you can see these tabs: General, Notifications, Order Blotter, Position Blotter, Stock Watch, Smart Routes, Market Depth, Time & Sales, Keyboard Trading.

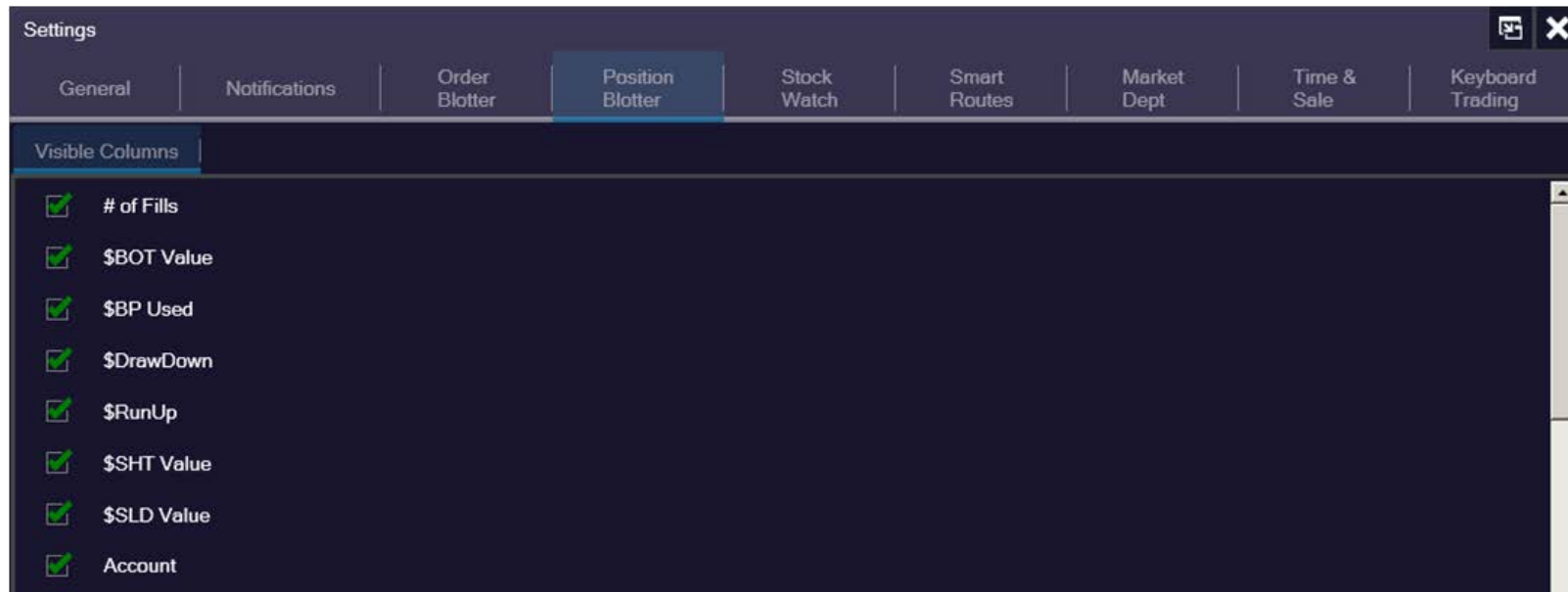
From the Notifications tab, you can turn on/off the prompt window messages.



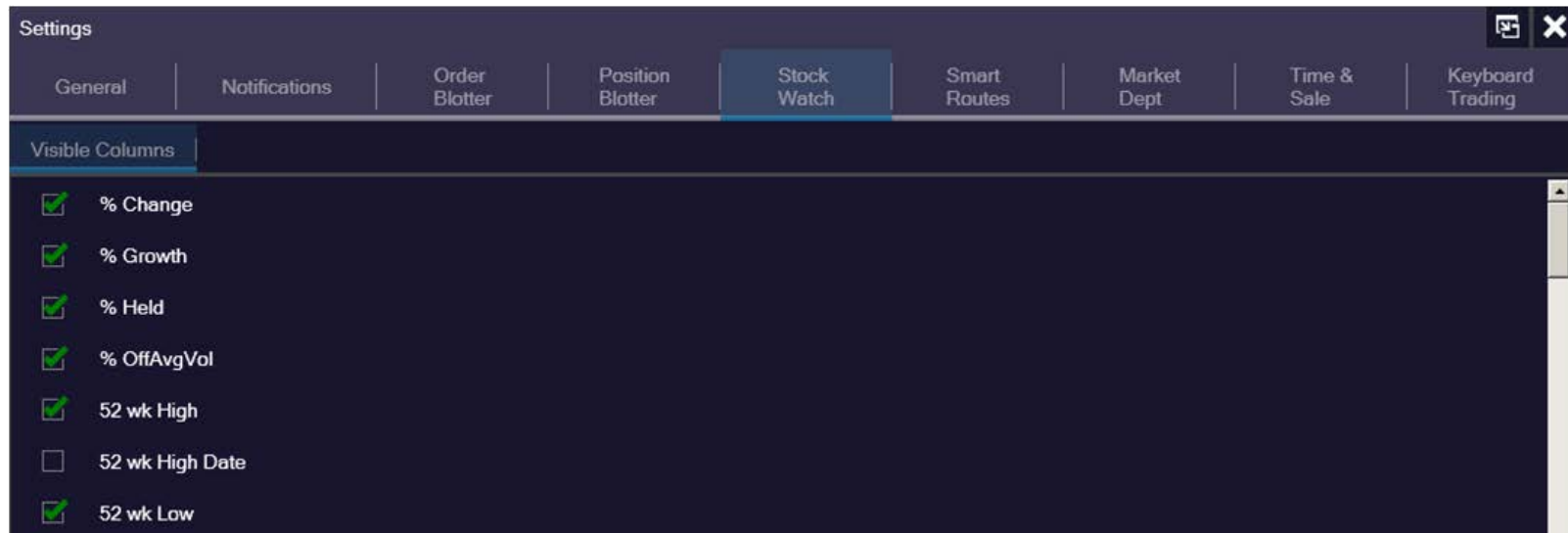
From the Order Blotter tab, you can Check/uncheck the visible columns you would like to see in the Order Blotter window.



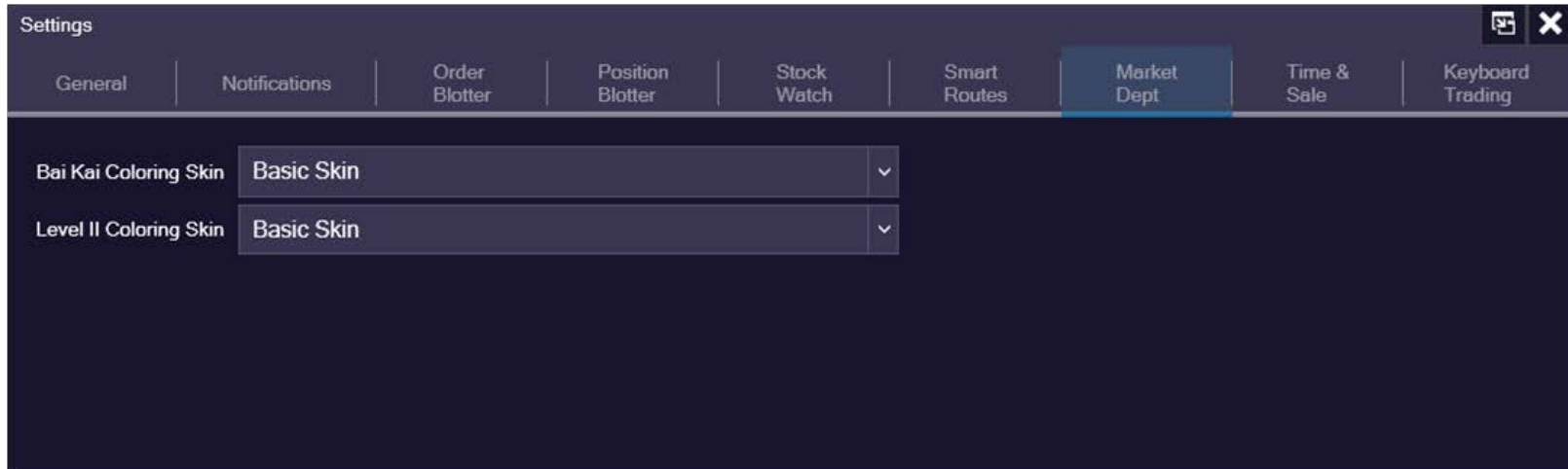
From the Position Blotter tab, you can Check/uncheck the visible columns you would like to see in the Position Blotter window.



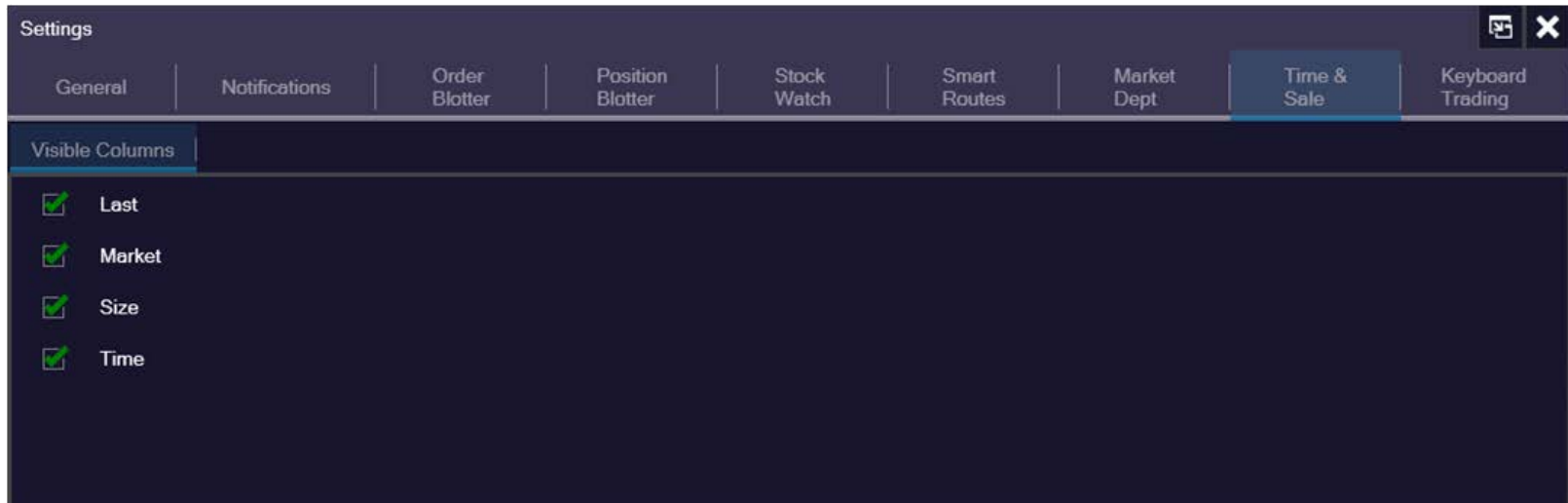
From the Stock Watch tab, you can Check/uncheck the visible columns you would like to see in the Stock Watch window.



On the Market Depth tab, from the dropdown menu, you can change the background color of the Bai Kai and Level II window.



From the Time & Sales tab, you can Check/uncheck the visible columns you would like to see in the Time & Sales window.



From Keyboard Trading tab, you will be able to create “hotkeys” to send orders.

(Click [here](#) for user guide on how to setup Keyboard Trading).

List of Shortcuts	Header	Account	Symbol	Side	Price	Destination	Order Type	Quantity	Repeat	Timer	Action
Cancel All	Ctrl+Q				Displayed						
Cancel All Buy	Ctrl+B				Displayed						
Cancel All Sell	Ctrl+S				Displayed						
Cancel All Sell/Short	Ctrl+E				Displayed						
Cancel All Short	Ctrl+D				Displayed						
Cancel Best	Ctrl+L				Displayed						
Cancel Best Buy	Alt+B				Displayed						
Cancel Best Sell	Alt+G				Displayed						
Cancel Best Sell/Short	Alt+H				Displayed						
Cancel Best Short	Alt+H				Displayed						

Shortcut Combinations

Create Edit Delete Close Print

The Position blotter is where you can monitor both your open and closed positions. You can also use it to review your performance during the trading session.

You can also drag the columns to arrange them according to your preference.

Clicking the "Close" button will flat the position at market price.

Close	Account	Symbol	Position	Last	Avg Cost	Open PnL	Close PnL	Total PnL	Position Value	Shares Traded	Shar
Close	Toro8119	C	100	45.49	45.38	11.00	0.00	11.00	4,538.00	100	100
Close	Toro8119	F	100	7.07	7.05	1.72	7.50	5.78	705.00	300	200
Close	Toro8119	V	100	202.75	202.90	14.70	0.00	14.70	20,290.00	100	100
Close	Toro8119	BAC	100	25.30	25.27	3.00	0.00	3.00	2,527.00	100	100
Close	Toro8119	FB	50	259.23	259.10	6.50	0.00	6.50	12,955.00	50	50
Close	Toro8119	DAL	0	33.77	0.00	0.00	0.50	0.50	0.00	100	50
Close	Toro8119	TSLA	0	422.62	0.00	0.00	151.00	151.00	0.00	200	100
Close	Toro8119	AAPL	-100	110.04	109.73	30.50	0.00	30.50	-10,973.00	100	0
Close	Toro8119	AA	-100	13.39	13.36	2.50	0.00	2.50	-1,336.00	100	0

Position: 650 Total Volume: 1,150 Total Open PnL: -25.48 Total Close PnL: 143.00

The Order blotter shows you daily order activity.

You can also drag the columns to arrange them according to your preference.

Cancel	Time	Account	Symbol	Side	Price	Order Size	Order Status	Order Type	CI Order ID	Destination	Created By	Last Filled Qty	Avg Filled P
	9:48:00	Toro8119	AA	Buy	MKT	100	Filled	Market	005206390019035H	SIM1	Toro8119	100	13.36
	9:47:53	Toro8119	V	Sell	MKT	100	Filled	Market	005206390019034H	SIM1	Toro8119	100	202.84
	9:47:45	Toro8119	AAPL	Buy	MKT	100	Filled	Market	005206390019033H	SIM1	Toro8119	100	110.00
	9:47:42	Toro8119	FB	Sell	MKT	50	Filled	Market	005206390019032H	SIM1	Toro8119	50	259.38
	9:47:42	Toro8119	F	Sell	MKT	100	Filled	Market	005206390019031H	SIM1	Toro8119	100	7.07
	9:47:42	Toro8119	C	Sell	MKT	100	Filled	Market	005206390019030H	SIM1	Toro8119	100	45.50
	9:46:00	Toro8119	DAL	Sell	MKT	50	Filled	Market	005206390019029H	SIM1	Toro8119	50	33.69
	9:45:57	Toro8119	TSLA	Sell	MKT	100	Filled	Market	005206390019028H	SIM1	Toro8119	100	420.50
	9:45:45	Toro8119	DAL	Buy	33.71	50	Filled	Limit	005206390019027H	SIM1	Toro8119	50	33.70
	9:45:31	Toro8119	FB	Buy	259.17	50	Filled	Limit	005206390019025H	SIM1	Toro8119	50	259.10
	9:44:57	Toro8119	AA	Short	13.32	100	Filled	Limit	005206390019023H	SIM1	Toro8119	100	13.36
	9:44:48	Toro8119	BAC	Buy	25.27	100	Filled	Limit	005206390019021H	SIM1	Toro8119	100	25.27
	9:44:21	Toro8119	TSLA	Buy	419.09	100	Filled	Limit	005206390019019H	SIM1	Toro8119	100	418.99
	9:44:09	Toro8119	AAPL	Short	109.73	100	Filled	Limit	005206390019017H	SIM1	Toro8119	100	109.73

All Orders Open Orders Filled Orders Executions Export 21 Orders 0 Open Orders

On the All Orders tab, you will see all the orders that you have placed regardless of the status of the order.

On the Open Orders tab, you will see the orders that are Open and not yet filled.

You can also drag the columns to arrange them according to your preference.

You can cancel Open Orders by clicking on the Red X button.

Cancel	Time	Account	Symbol	Side	Price	Order Size	Order Status	Order Type
X	15:32:31	Toro8119	FB	Buy	251.70	1	New	Limit
X	15:32:13	Toro8119	TSLA	Buy	421.41	1	New	Limit
X	15:31:42	Toro8119	ROKU	Buy	162.17	100	New	Limit
X	14:55:42	Toro8119	AAPL	Short	110.20	100	New	Limit
X	14:55:34	Toro8119	AAPL	Sell	110.20	100	New	Limit
X	14:53:27	Toro8119	F	Buy	7.11	100	New	Limit
X	14:53:14	Toro8119	C	Buy	44.72	100	New	Limit

On the Filled Orders tab, you will see all the orders that were filled.

Time	Account	Symbol	Side	Price	Order Size	Order Status	Order Type	Destination	Created By	Last Filled Qty	Avg Filled Price	Liq Flag	Total Filled Sh
14:55:18	Toro8119	TSLA	Buy	MKT	100	Filled	Market	SIM1	Toro8119	100	423.92	R	100
14:55:11	Toro8119	TSLA	Short	422.91	100	Filled	Limit	SIM1	Toro8119	100	423.37	R	100
14:55:08	Toro8119	TSLA	Buy	MKT	200	Filled	Market	SIM1	Toro8119	200	423.54	R	200
14:53:43	Toro8119	TSLA	Sell	423.34	100	Filled	Limit	SIM1	Toro8119	100	423.34	A	100
14:53:37	Toro8119	TSLA	Short	423.34	100	Filled	Limit	SIM1	Toro8119	100	423.34	A	100
11:25:54	Toro8119	BAC	Sell	MKT	100	Filled	Market	SIM1	Toro8119	100	25.40	R	100
11:25:50	Toro8119	C	Buy	MKT	50	Filled	Market	SIM1	Toro8119	50	45.48	R	50

The Executions tab will display the details of the successfully executed orders.

Date	Exec Time	Account	Symbol	Side	Price	Exec Price	Order Size	Order Status	Order Type	Destination	Created By	Last Filled Qty	Avg Filled Price
17/09/2020	14:55:18	Toro8119	TSLA	Buy	MKT	423.92	100	Filled	Market	SIM1	Toro8119	100	423.92
17/09/2020	14:55:11	Toro8119	TSLA	Short	422.91	423.37	100	Filled	Limit	SIM1	Toro8119	100	423.37
17/09/2020	14:55:08	Toro8119	TSLA	Buy	MKT	423.54	200	Filled	Market	SIM1	Toro8119	200	423.54
17/09/2020	14:54:09	Toro8119	TSLA	Sell	423.34	423.34	100	Filled	Limit	SIM1	Toro8119	100	423.34
17/09/2020	14:54:09	Toro8119	TSLA	Short	423.34	423.34	100	Filled	Limit	SIM1	Toro8119	100	423.34
17/09/2020	11:25:54	Toro8119	BAC	Sell	MKT	25.40	100	Filled	Market	SIM1	Toro8119	100	25.40
17/09/2020	11:25:50	Toro8119	C	Buy	MKT	45.48	50	Filled	Market	SIM1	Toro8119	50	45.48

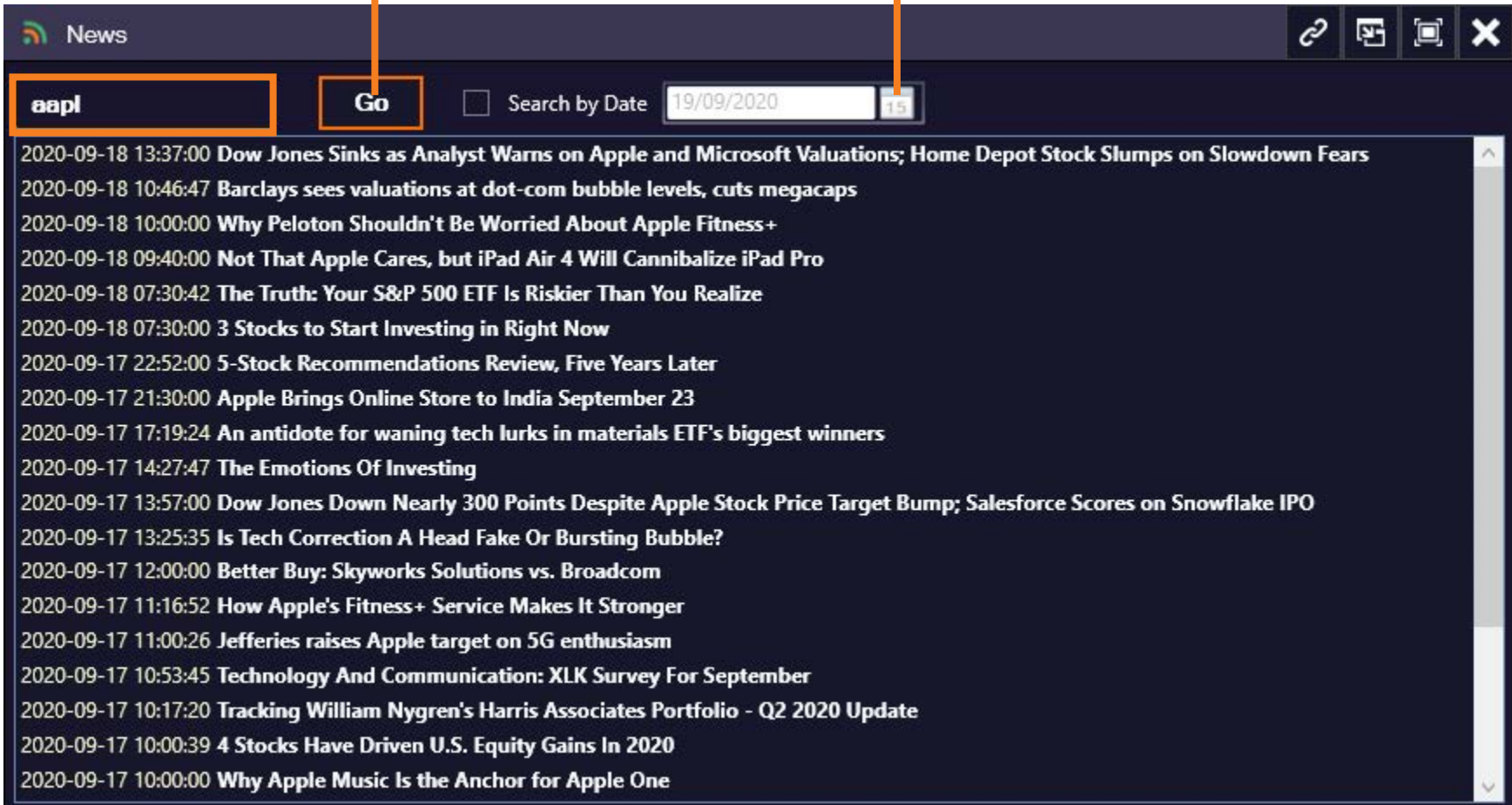
Movers window is where you can see select to different exchange the top volume stocks, top gainers etc.

Top Movers										
Market: NASDAQ Volume Actives Market Hours										
Name	Symbol	Last	Change	Change %	Volume	Open	High	Low	Trade Value	# Trades
Apple Inc.	AAPL	112.17	-3.37	-2.92 %	153,317,947	115.23	116	112.04	17427911700	1161417
Inovio Pharmaceuticals Inc.	INO	18.52	4.89	35.88 %	109,685,958	14.38	18.55	14.08	1830634690	444493
American Airlines Group Inc	AAL	13.8	0.66	5.02 %	74,860,407	13.21	13.96	12.98	1021513110	201578
Tesla Inc.	TSLA	441.76	-8	-1.78 %	71,778,730	439.87	457.79	435.31	32075806800	1094504
PROSHARES TRUST	SQQQ	25.28	1.18	4.9 %	71,509,348	23.919	25.34	23.77	1753464860	184949
Oasis Petroleum Inc.	OAS	0.56	0.0405	7.8 %	50,717,538	0.61	0.6314	0.547	29865500	42976
DraftKings Inc.	DKNG	51.03	2.82	5.85 %	49,190,046	49.91	53.2537	49.5	2556742870	250513
Sorrento Therapeutics Inc.	SRNE	8.36	1.42	20.46 %	46,728,478	6.8	8.535	6.71	365604873	160917
Nikola Corporation	NKLA	33.28	0.45	1.37 %	46,492,038	30.39	34.92	30.25	1550301780	233508
Heat Biologics Inc.	HTBX	1.38	0.26	23.21 %	43,409,439	1.1381	1.4	1.12	56604896	53840
PowerShares QQQ Trust Ser	QQQ	274.61	-4.45	-1.59 %	40,827,360	279.77	280.36	274.25	11335073700	260783
Sirius XM Holdings Inc.	SIRI	5.4	0.04	0.75 %	40,107,048	5.418	5.51	5.37	217773946	70273
Vaxart Inc.	VXRT	7.38	0.88	13.54 %	39,826,712	6.4	7.54	6.06	280994071	116060
Advanced Micro Devices Inc	AMD	76.66	-2.27	-2.88 %	37,894,576	79.35	79.72	76.54	2955244340	225851
PROSHARES TRUST	TQQQ	127.01	-6.41	-4.8 %	37,462,399	134.53	135.32	126.59	4923831150	329296
United Airlines Holdings Inc	UAL	38.3	1.5	4.08 %	33,118,035	36.9	38.9	36.3601	1261185860	167042
Color Star Technology Co. Lt	HHT	0.54	-0.25	-31.65 %	30,766,949	0.4519	0.55	0.4499	15099974	42476
Facebook Inc.	FB	263.52	-8.9	-3.27 %	29,060,321	267.29	272.44	261.79	7760867250	312320
Workhorse Group Inc.	WKHS	26.82	1.47	5.8 %	27,684,438	24.98	28.2	24.89	745045728	165519
Intel Corporation	INTC	50.37	0.37	0.74 %	26,431,234	50.51	51.03	50.165	1335389080	156487
Pacific Ethanol Inc.	PEIX	6.07	1.27	26.46 %	26,282,000	5.25	6.29	5.16	153447310	83031
Microsoft Corporation	MSFT	205.05	-3.73	-1.79 %	25,963,871	210.62	210.65	204.64	5375873250	285038
Peloton Interactive Inc.	PTON	82.59	-2.86	-3.35 %	25,118,412	83.8	86.35	82.2	2102830360	146010
Cisco Systems Inc.	CSCO	40.42	-0.18	-0.44 %	24,160,711	40.72	41.17	40.39	982396040	110768
Arrowhead Pharmaceuticals	ARWR	47.43	13.63	40.33 %	23,943,673	40.05	53.12	40.05	1160678780	159120
Comcast Corporation Class	CMCSA	46.81	0.35	0.75 %	23,741,868	47.05	47.5	46.7	1115657480	109108
Micron Technology Inc.	MU	50.21	1.16	2.36 %	23,571,115	49.11	51.22	48.96	1190176800	150255
Naked Brand Group Limited	NAKD	0.1525	0.0038	2.56 %	21,478,428	0.1493	0.165	0.145	3281542	15721
Zynga Inc.	ZNGA	8.3	-0.22	-2.58 %	18,912,561	8.55	8.59	8.27	158332392	57416

News window shows the news headlines on what's going on with the companies, stock market, etc. You can click on each Headline and it will direct you to the news page for you to view/read more details.

Insert a valid symbol
ex: AAPL and press Go.

You can also filter and search the new by specific date.



The Chart window is where you can view the trend of a symbol, in addition to being able to place trend lines, pitchforks, texts, and much more. This can help you analyze the trend of the Market, and thereby helping you make smarter decisions when placing trades.



SINGLE SCREEN LAYOUT EXAMPLE

Market Depth - Level II View

QQQ Last 179.57 ↓ High/Low 179.83x178.59 Chg 1.25 Chg% 0.70 %
Toro8117 Vol 25,572K Bid/Ask 179.56 x 179.57 Size 4K x 3K VWAP 179.35

Destination Qty Price Order Type Display Qty
 SIM1 100 LMT 179.47 Day Order Qty

Stop Loss Take Profit
 1001 Flat Position ON Time & Sales 0.00 0.00

Buy Buy @ bid Buy @ ask Sell Sell @ ask Sell @ bid
 X Buy X Sell X All Short Short @ ask Short @ bid

Market	Price	Size	Time	Market	Price	Size	Time
PHL	179.57	1700	15:41:23	ARCA	179.58	6700	15:41:19
NSD	179.57	1500	15:41:27	EDGX	179.58	1100	15:41:21
BATS	179.56	800	15:41:14	NYSE	179.58	900	15:41:21
EDGX	179.56	400	15:41:15	BATS	179.58	300	15:41:23
ARCA	179.56	4300	15:41:19	NSD	179.58	3000	15:41:27
MTD	179.56	2000	15:41:19	MTD	179.58	3000	15:41:27

Chart

Enter Symbol QQQ 5m Views Display Studies +

haywood 1D 5D 1M 3M 6M YTD 1Y 5Y All

Order Blotter

Cancel	Account	Time	Symbol	Order Size	Price	Avg Filled Price	Side	Order Type	Order Status	Destination
	Toro8117	15:30:28	FB	100	166.37	166.37	Buy	Limit	Filled	SIM1
	Toro8117	15:30:07	AAPL	100	189.39	189.39	Buy	Limit	Filled	SIM1
	Toro8117	15:29:34	TSLA	100	279.11	279.11	Buy	Limit	Filled	SIM1
	Toro8117	15:29:04	NVDA	100	179.29	179.29	Buy	Limit	Filled	SIM1
	Toro8117	15:28:42	QQQ	100	179.47	179.47	Buy	Limit	Filled	SIM1
	Toro8117	15:28:31	TQQQ	100	56.49	56.49	Buy	Limit	Filled	SIM1
	Toro8117	15:15:16	SPY	100	282.21	282.21	Buy	Limit	Filled	SIM1
	Toro8117	15:14:32	FB	100	MKT	166.24	Sell	Market	Filled	SIM1

All Orders Open Orders Filled Orders Executions Export 15 Orders 0 Open Orders

Position Blotter

Destinations: Toro8117-SIM1

Close	Position	Symbol	Avg Cost	Last	Open PnL	Position Value	Account	Shares Traded	Shares
Close	100	AAPL	189.39	189.68	29.00	18,939.00	Toro8117	500	300
Close	100	QQQ	179.47	179.57	10.00	17,947.00	Toro8117	100	100
Close	100	TSLA	279.11	279.92	81.00	27,911.00	Toro8117	100	100
Close	100	FB	166.37	166.50	13.00	16,637.00	Toro8117	700	400
Close	100	SPY	282.21	282.42	21.00	28,221.00	Toro8117	100	100
Close	100	TQQQ	56.49	56.58	9.00	5,649.00	Toro8117	100	100
Close	100	NVDA	179.29	179.65	36.09	17,929.00	Toro8117	100	100

Position: 700 Total Volume: 1,700 Total Open PnL: 192.10 Total Close PnL: -28.00 Export

Chart

Enter Symbol QQQ 1m Views Display Studies +

haywood 1D 5D 1M 3M 6M YTD 1Y 5Y All

Haywood Trader® v3.02 - Toro8117
 File Windows Settings Help

15:41:26 Market Data Haywood

Order [637606364014693H, Buy, Toro8117, FB, 166.37, 100, 41] is filled



Haywood Financial Technology Inc.
6010 Henri-Bourassa West, Suite 200
Montreal, Quebec, Canada H4R 3A6

Phone Number: +1 514-700-1247
Email: info@haywoodtrader.com
Website: <https://haywoodtrader.com>